

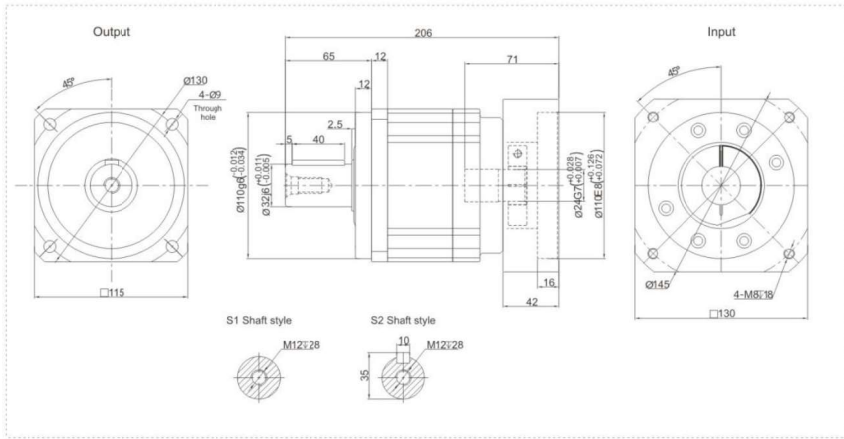
TB Series - High Speed and Precision



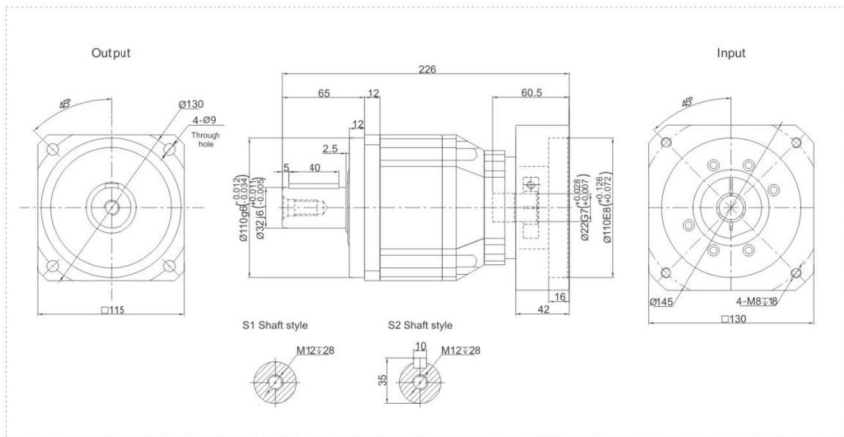
TB

TB115 Series

TB115 One Stage



TB115 Two Stage



Performance Data

The TB series reducer adopts a standardized flange interface. The installation is convenient and quick. Due to its integral structure design, this high-precision model can operate excellently in many demanding working application.

TB115	One Stage										Two Stage											
	Speed Ratio	i	3	4	5	6	7	8	9	10	15	20	25	30	35	40	50	60	70	80	100	
Nominal Output Torque	T ₁	Nm	210	290	333	310	300	260	-	235	210	290	333	310	300	260	333	310	300	260	235	
Emergency Stop Torque	T ₂	Nm	T ₁ × 3										T ₁ × 3									
Nominal Input Speed	S ₁	rpm	4000										4000									
Maximum Input Speed	S ₂	rpm	8000										8000									
Maximum Output Torque	T ₄	Nm	T ₁ × 3 × 60%										T ₁ × 3 × 60%									
Maximum Radial Force	F _r	N	6700										6700									
Maximum Axial Force	F _a	N	3350										3350									
Torsional Rigidity	-	Nm/arcmin	25										25									
Efficiency	η	%	≥97										≥94									
Service Life	-	h	20000										20000									
Noise	-	dB	≤63										≤63									
Weight	-	Kg	8.5										9.5									
Backlash	P0		≤1										≤3									
	P1	arcmin	≤3										≤5									
	P2		≤5										≤7									
Operating Temperature	-	°C	-20~90										-20~90									
Lubrication	-		Synthetic Grease										Synthetic Grease									
Protection Class	-		IP65										IP65									
Mounting Position	-		Any Direction										Any Direction									
Moment of Inertia	J	kg.cm ²	3.25	2.74	2.71	2.65	2.62	2.58	-	2.57					0.47							0.44

Notes:

- Speed ratio (i=Sin/Sout)
- When the output speed is 100 rpm, it acts on the center of the output shaft.
- For Continuous operation, the service life is no less than 10,000 hours.
- The noise value was measured based on the input rotational speed of 3000 rpm, i=10.

Any product models and parameters in this sample are subject to change without prior notice. Please confirm with the company before ordering.