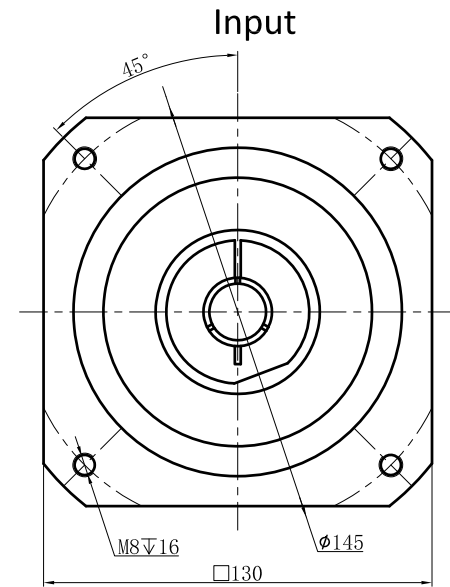
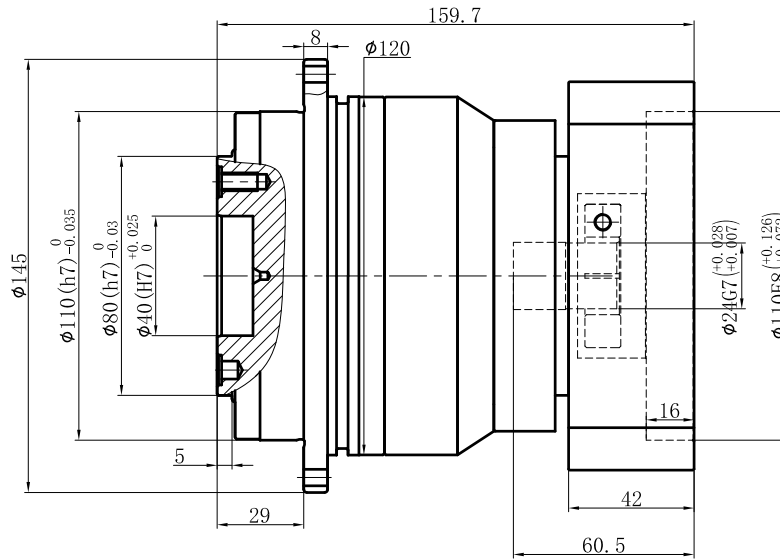
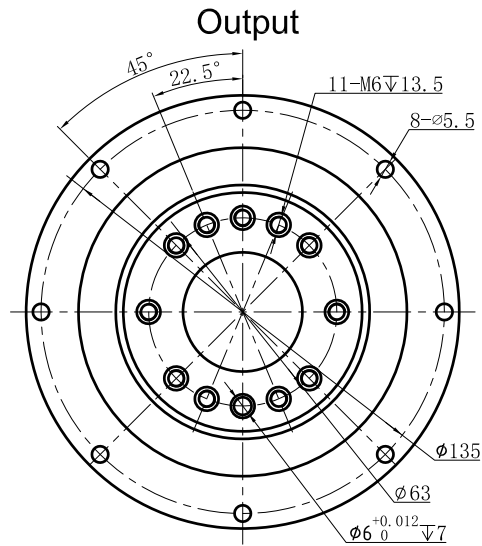


Customer name:



Transmission ratio	(<u> A </u>):1	Mass moments of inertia	(<u> B </u>)Kg.cm ²											
Rated output torque	(<u> C </u>)Nm	Max.Output torque	(<u> D </u>)Nm	40	0.47	260	468	Sign/Date						
Rated input speed	4000rpm	Max input speed	8000rpm	35	0.47	300	540			100	0.44	235	423	
Max.radial force	-	Max.axial force	2990N	25	0.47	333	599		70	0.44	300	540		
Efficiency	≥ 94%	Operating temperature	-20°~+90°	20	0.47	290	522		50	0.44	333	599		
Mounting position	Any	Lubrication method	Synthetic grease	Ratio	A	B	C	D	Ratio	A	B	C	D	
Weight ±3%	7.9Kg	Service life	20000h	NOTE				Precision Planetary Reducer				TD110		
Standard backlash	≤ 7 arcmin	Protection class	IP65	Mark	No.	Sign	Date					TD110-L2		
Motor power		Noise level	60dB									Shaft Type		Precision
Motor dimensions														

Above specifications are for standard reducer and may be subject to change without notice.