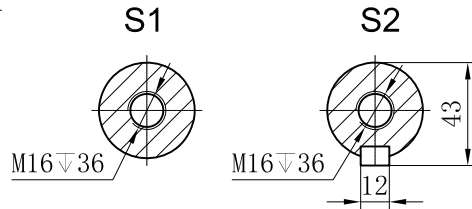
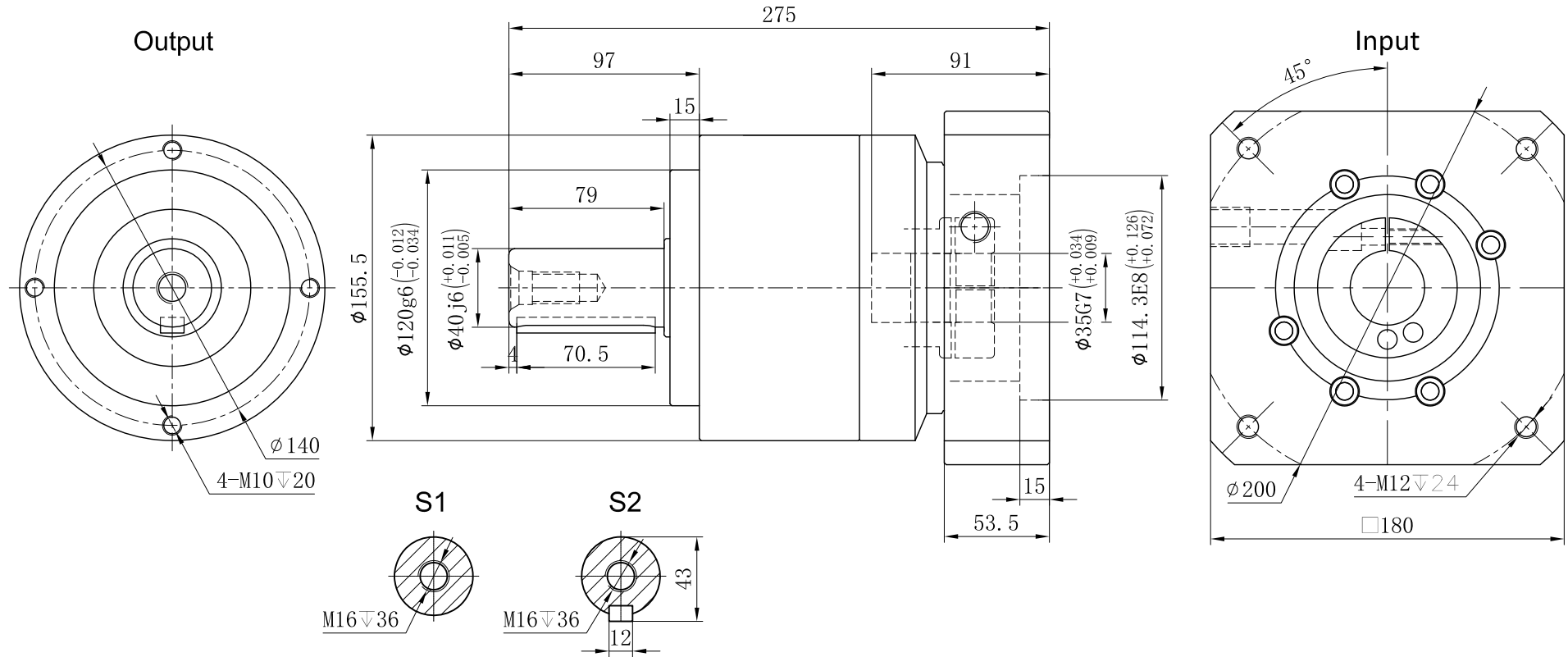


Customer Name:



Transmission Ratio	(<u>A</u>):1	Mass Moments Of Inertia	(<u>B</u>)Kg.cm ²
Rated Output Torque	(<u>C</u>)Nm	Max Output Torque	(<u>D</u>)Nm
Rated Input Speed	3000rpm	Max Input Speed	4000rpm
Max Radial Force	9400N	Max Axial Force	4700N
Efficiency	≥ 97%	Operating Temperature	-20°~+90°
Mounting Position	Any	Lubrication Method	Synthetic grease
Weight ±3%	19Kg	Service Life	20000h
Standard Backlash	≤ 5 arcmin	Protection Class	IP65
Motor Power	-- KW	Noise Level	65dB
Motor Dimensions			

Ratio	A	B	C	D	Sign/Date	Ratio	A	B	C	D
	3	9.21	340	612		7	7.14	550	990	
	4	7.54	535	936		8	7.07	500	900	
	5	7.42	650	1170		10	7.03	445	801	
	6	7.25	600	1080						

Note						Precision Planetary Reducer	TCE155	
							TCE155-L1	
Mark	No.	Sign	Date				Shaft Type	Precision
	DRAW							
	CHEC							
	APPR							
	RULE							

Above specifications are for standard reducer and may be subject to change without notice.