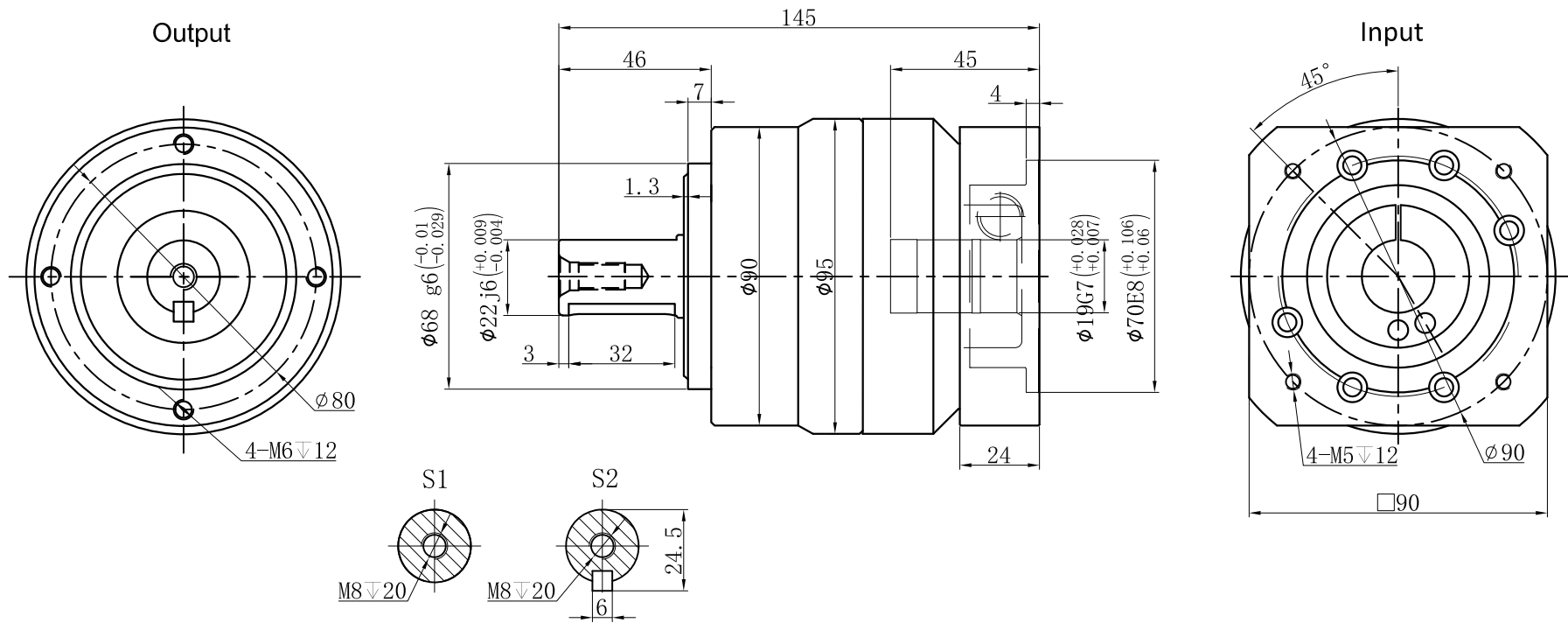


Customer name:



Transmission ratio	(<u>A</u>):1	Mass moments of inertia	(<u>B</u>)Kg.cm ²											
Rated output torque	(<u>C</u>)Nm	Max.output torque	(<u>D</u>)Nm											
Rated input speed	3000rpm	Max input speed	6000rpm		6	0.45	140	252	Sign/Date					
Max.radial force	3250N	Max.axial force	1625N		5	0.47	150	270		10	0.44	100	180	
Efficiency	$\geq 97\%$	Operating temperature	-20°~+90°		4	0.48	110	198		8	0.44	120	216	
Mounting position	Any	Lubrication method	Synthetic grease		3	0.61	100	180		7	0.45	135	243	
Weight $\pm 3\%$	3.4Kg	Service life	20000h	Ratio	A	B	C	D		Ratio	A	B	C	D
Standard backlash	≤ 5 arcmin	Protection class	IP65	Note						Precision planetary reducer	TCE090			
Motor power		Noise level	60dB	Mark							TCE090-L1			
Motor dimensions				No.							Shaft Type	Precision		
				Sign										
				Date										

Above specifications are for standard reducer and may be subject to change without notice.