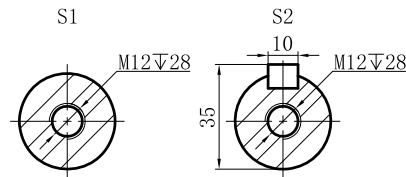
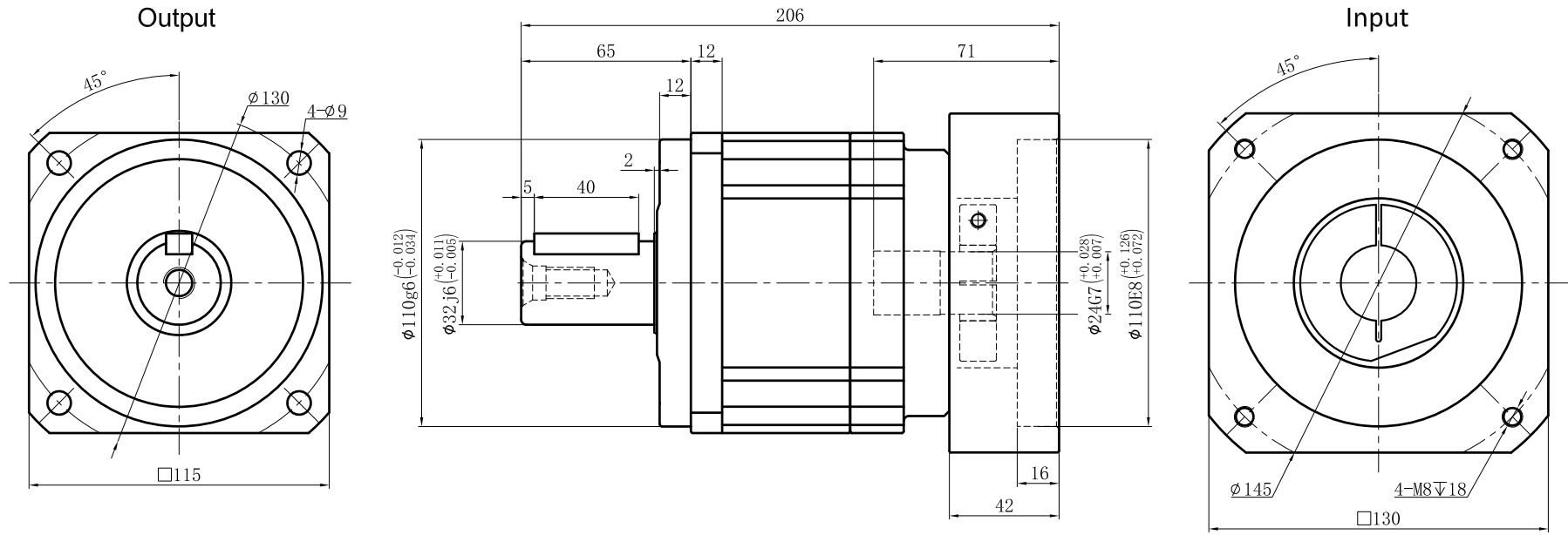


Customer name:



Transmission ratio	(<u> A </u>):1	Mass moments of inertia	(<u> B </u>)Kg.cm ²
Rated output torque	(<u> C </u>)Nm	Max.Output torque	(<u> D </u>)Nm
Rated input speed	4000rpm	Max input speed	8000rpm
Max.radial force	6700N	Max.axial force	3350N
Efficiency	≥ 97%	Operating temperature	-20°~+90°
Mounting position	Any	Lubrication method	Synthetic grease
Weight ±3%	8.5Kg	Service life	20000h
Standard backlash	≤ 5 arcmin	Protection class	IP65
Motor power		Noise level	63dB
Motor dimensions			

	6	2.65	310	558	Sign/Date					
	5	2.71	333	599.4			10	2.57	235	423
	4	2.74	290	522			8	2.58	260	468
	3	3.25	210	378				7	2.62	300
Ratio	A	B	C	D		Ratio	A	B	C	D

NOTE					Precision Planetary Reducer	TB115	
	Mark	No.	Sign	Date	TB115-L1		
	DRAW					Shaft Type	Precision
	CHEC						
	APPR						
	RULE						

(Above specifications are for standard reducer and may be subject to change without notice.)