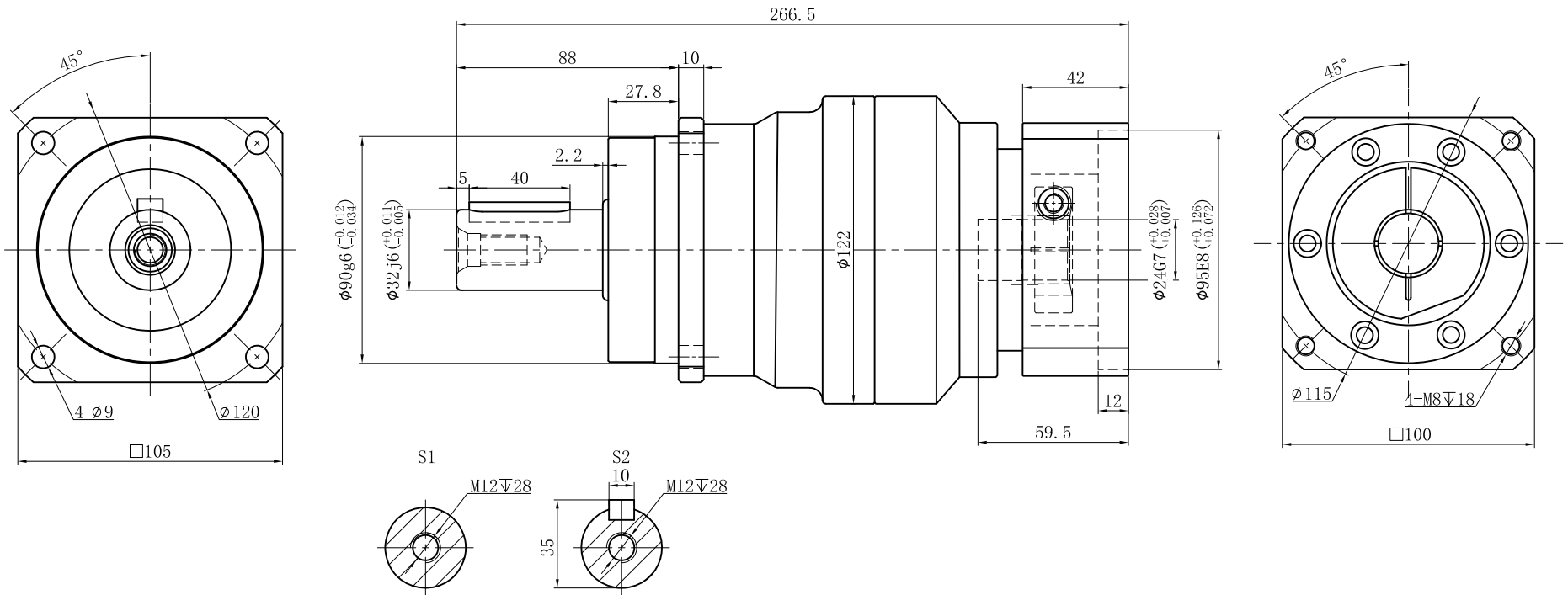


Customer name:

Output

Input



Transmission ratio	(A):1	Mass moments of inertia	(B)Kg.cm ²												
Rated output torque	(C)Nm	Max.Output torque	(D)Nm	40	0.44	260	468	Sign/Date							
Rated input speed	4000rpm	Max input speed	8000rpm	35	0.47	300	540			100	0.44	235	423		
Max.radial force	9200N	Max.axial force	5820N	30	0.47	310	558			80	0.44	260	468		
Efficiency	≥ 94%	Operating temperature	-20°~+90°	25	0.47	333	599			70	0.44	300	540		
Mounting position	Any	Lubrication method	Synthetic grease	20	0.47	290	522			60	0.44	310	558		
Weight ±3%	8.1Kg	Service life	20000h	15	0.47	210	378		50	0.44	333	599			
Standard backlash	≤ 7 arcmin	Protection class	IP65	Ratio	A	B	C	D	Ratio	A	B	C	D		
Motor power		Noise level	63dB	NOTE								Precision Planetary Reducer		TF100	
Motor dimensions												TF100-L2			
												Shaft Type		Precision	

Above specifications are for standard reducer and may be subject to change without notice.