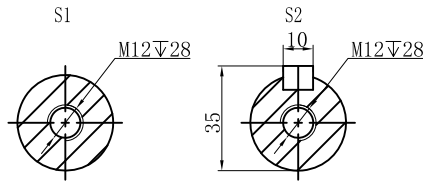
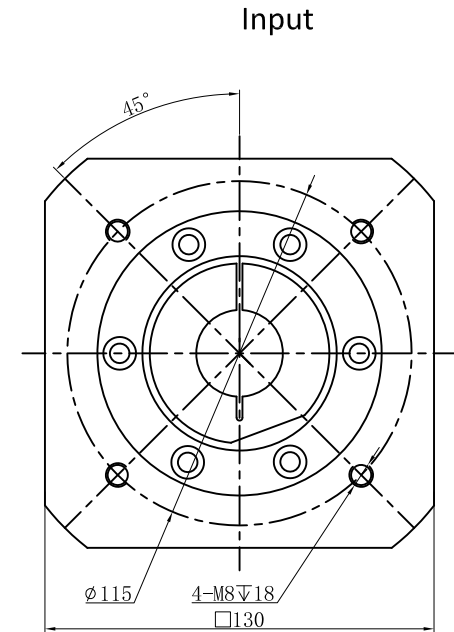
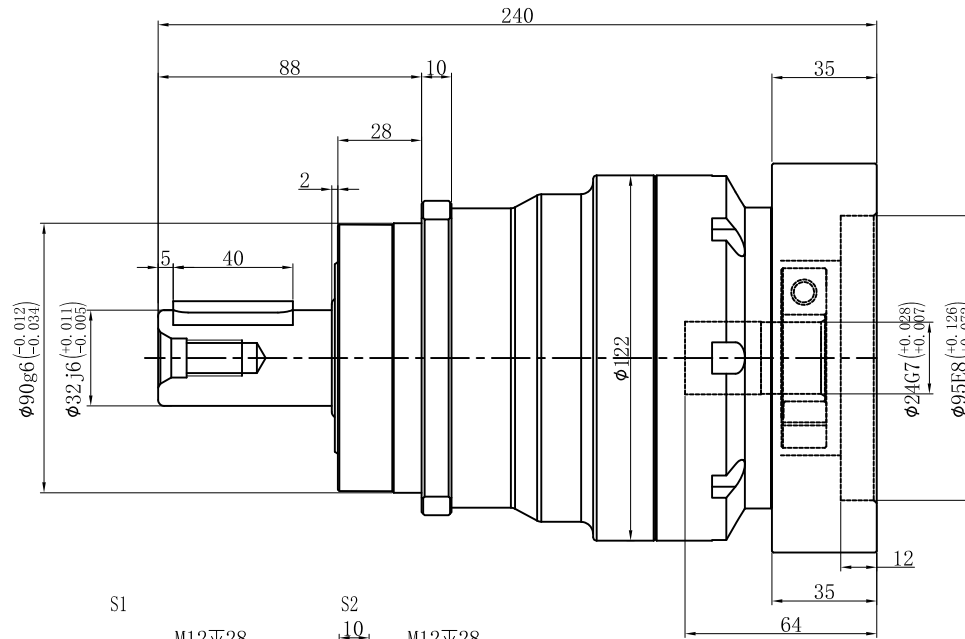
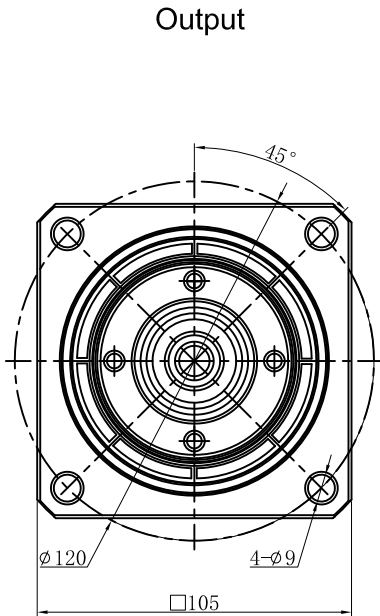


Customer name:



Transmission ratio	( A ):1	Mass moments of inertia	( B )Kg.cm <sup>2</sup>
Rated output torque	( C )Nm	Max.Output torque	( D )Nm
Rated input speed	4000rpm	Max input speed	8000rpm
Max.radial force	9200N	Max.axial force	5820N
Efficiency	≥ 97%	Operating temperature	-20°~+90°
Mounting position	Any	Lubrication method	Synthetic grease
Weight ±3%	8.9Kg	Service life	20000h
Standard backlash	≤ 5 arcmin	Protection class	IP65
Motor power		Noise level	63dB
Motor dimensions			

	10	2.57	235	423	Sign/Date					
	7	2.62	300	540			8	2.58	260	468
	5	2.71	333	599			6	2.65	310	558
	4	2.74	290	522			3	3.25	210	378
Ratio	A	B	C	D		Ratio	A	B	C	D

NOTE					Precision Planetary Reducer	TF100		
	Mark	No.	Sign	Date	TF100-L1			
		DRAW				Shaft Type		Precision
		CHEC						
		APPR						
		RULE						

Above specifications are for standard reducer and may be subject to change without notice.